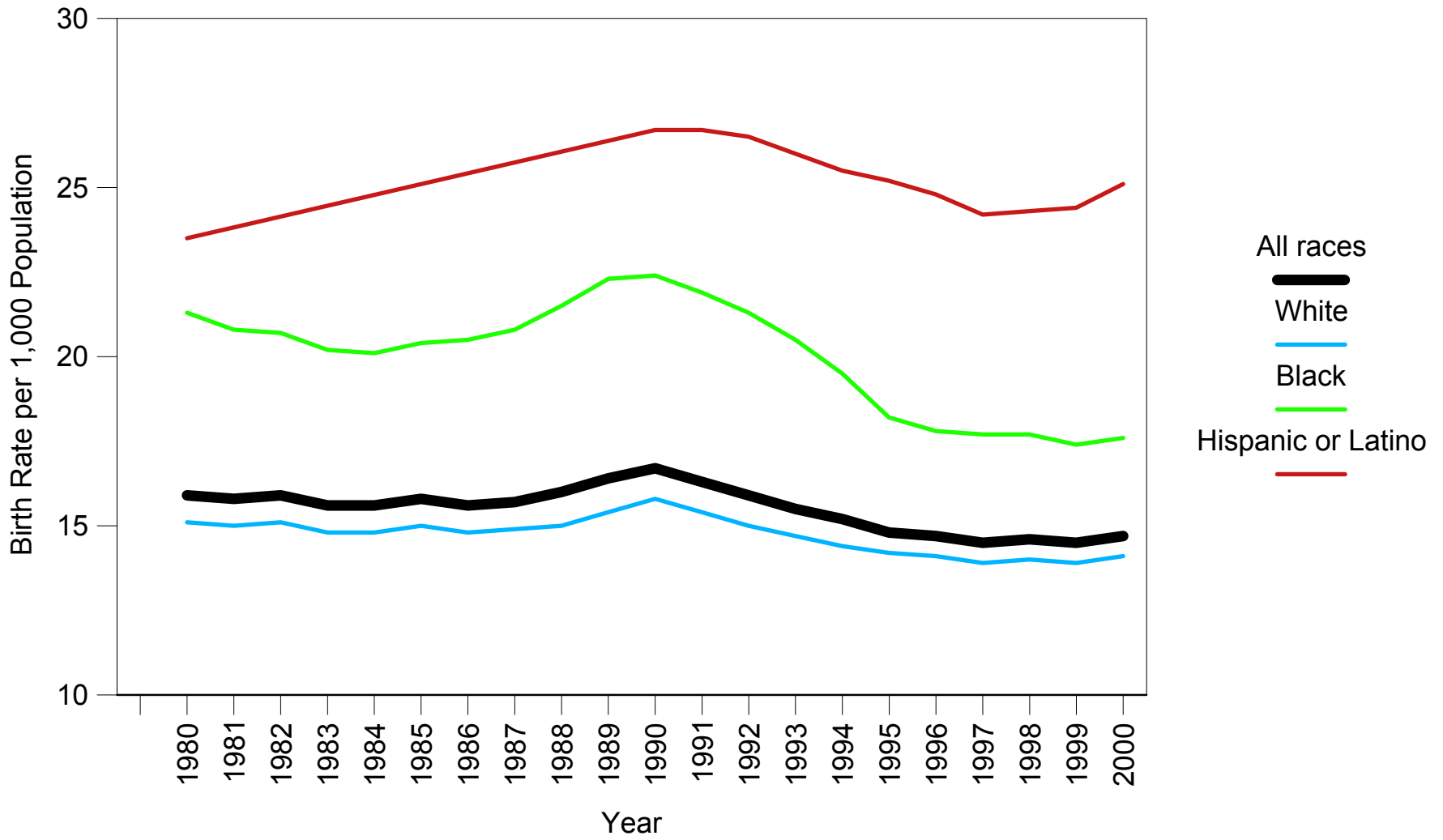


Crude Birth Rates per 1,000 Population  
by Race/Nationality, 1980-2000



SOURCES: Centers for Disease Control and Prevention, National Center for Health Statistics, National Vital Statistics System, Birth File. Martin JA, Hamilton BE, Ventura SJ, Menacker F, Park MM. Births: Final Data for 2000. National vital statistics reports; vol 50, no 5. Hyattsville, Maryland: National Center for Health Statistics, 2002; Ventura SJ. Births of Hispanic parentage, 1980 and 1985. Monthly vital statistics report; vol 32, no 6 and vol 36, no 11, suppl. Public Health Service. Hyattsville, Maryland. 1983 and 1988; Internet release of Vital statistics of the United States, 1998, vol 1, natality, tables 1-1 and 1-7 at [www.cdc.gov/nchs/datawh/statab/unpubd/natality/natab98.htm](http://www.cdc.gov/nchs/datawh/statab/unpubd/natality/natab98.htm).