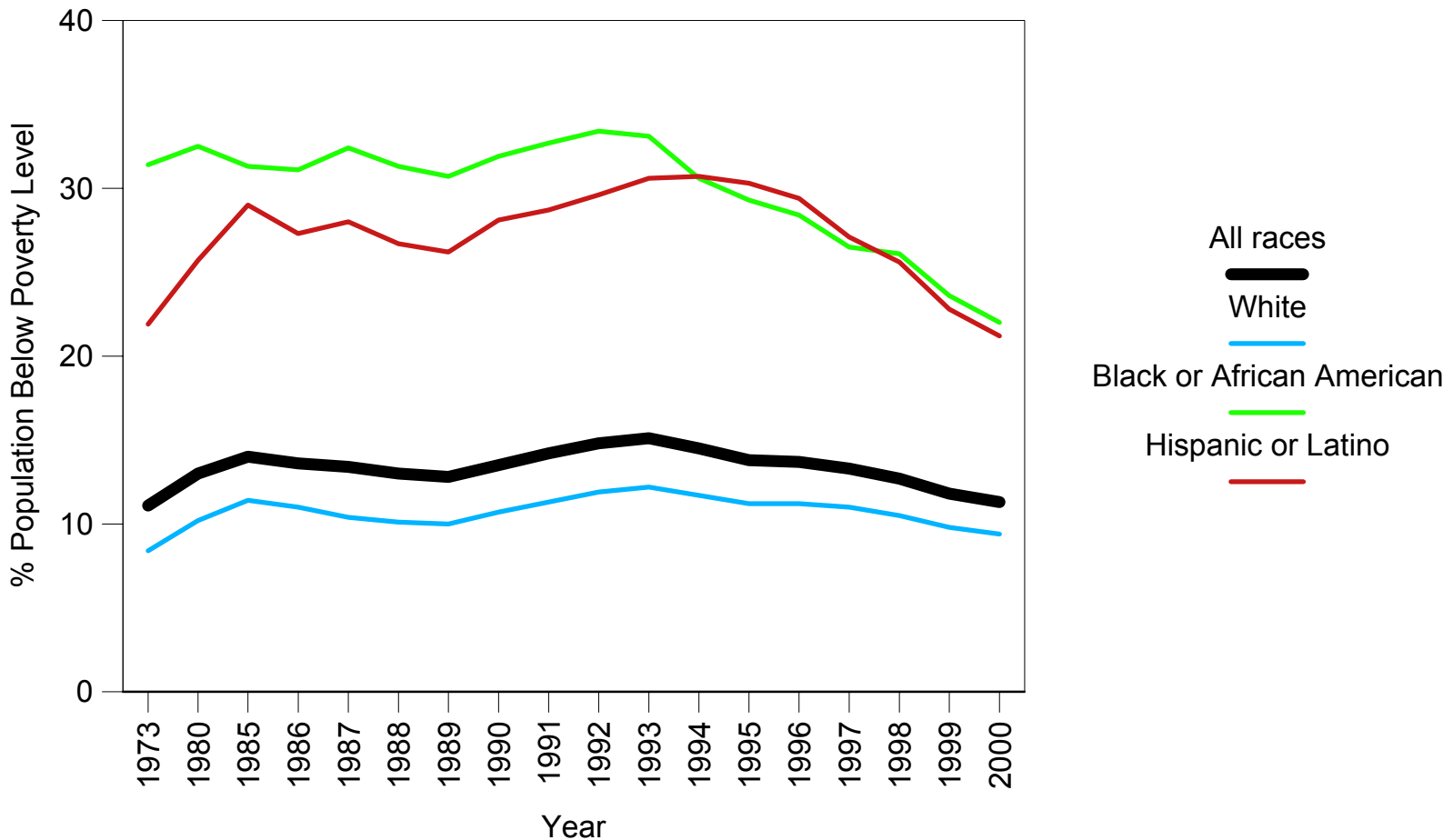


Percentage of People Living Below Poverty Level
by Race/Nationality, 1973-2000
(selected years)



SOURCES: U.S. Bureau of the Census, Current Population Survey, March; Dalaker J. Poverty in the United States: 2000. Current population reports, series P-60, no 214. Washington: U.S. Government Printing Office. 2001; and Table 2. Age, sex, household relationship, race and Hispanic origin by ratio of income to poverty level: 2000. Internet address: http://ferret.bls.census.gov/macro/032001/pov/new02_007.htm, as revised Dec 10, 2001 based on a Nov 2001 weighting correction.